

10|2002

LUXURY HOME BUILDER

Mountain Magic

HIGH-STYLE LIVING IN HIGHER ELEVATIONS

Mountain Magic

HIGH-STYLE LIVING IN HIGHER ELEVATIONS

Hand-carved into the 45-degree braces that are part of the post-and-beam home's open structure, two black bears stand sentry in the entry foyer. The floor is a combination of distressed cherry and flagstone. Peeled birch-bark trim, used throughout the interior, adds to the home's pastoral charm.

Dubrovsky designed and built the \$1.6 million home to serve as the model for the Chapin Estate. The gated, 5,300-acre community of 35 secondary homes geared toward New York City's most discriminating "campers" is being developed by The Woodstone Cos., for which Dubrovsky is a managing partner.

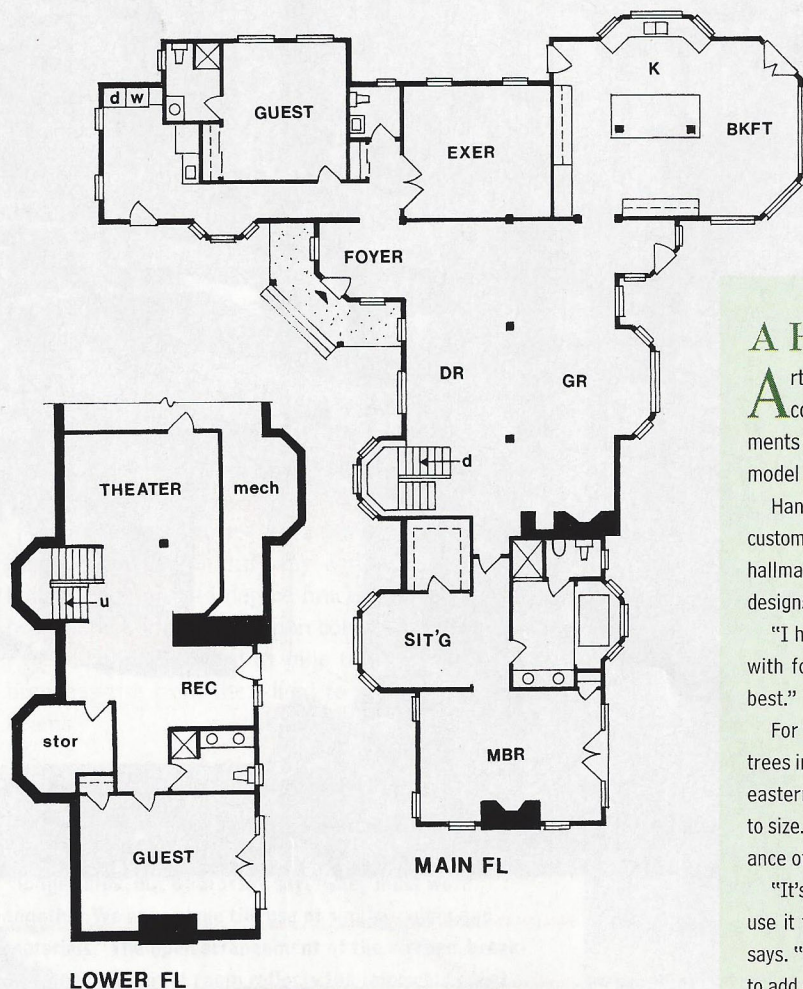
Located two hours from Midtown Manhattan, the development is on what was once part of a 20,000-acre wildlife preserve and still has an abundance of deer, grouse, pheasant, bears and eagles.

"Our clients live in an urban area and are looking for a weekend retreat in the country," says Dubrovsky. "When they come here and see what we have, they can't believe that this exists so close to the city. Within a couple of hours' drive, you can be in a place that resembles Montana."

For the model home, Dubrovsky deliberately selected what some builders, and many clients, might consider a difficult site — a 5-acre, cliffside location adjacent to Toronto Reservoir, one of two recreational lakes on the property. The home is perched on a ledge overlooking the water, with a 40-foot, sheer-rock drop-off on its left side.

"I did not look at this site as difficult, which it was, but as dramatic and full of potential," says Dubrovsky. "I wanted to demonstrate to the buyer, who may otherwise turn away from a site like this, the wonderful possibilities that existed here."

The combined space of the dining and great rooms provides ample space for entertaining large crowds, says Dubrovsky, but so far everyone has seemed to gravitate toward the informal atmosphere of the kitchen and



A Hands-on Approach


Artist Paul Stark of Sisters, Ore., transformed wood columns, railings, braces and other structural elements into fanciful depictions of nature throughout the model home at the Chapin Estate.

Handcrafted details such as stonework, metalwork, custom-painted tiles and Stark's carvings have become the hallmark of Steve Dubrovsky in the estate homes he designs and builds.

"I have a whole stable of artists that I have worked with for years," Dubrovsky says. "They are the very best."

For the columns that were transformed into two pine trees in the kitchen, a local mill supplied Dubrovsky with eastern white pine timbers that were hand-carved down to size. To create the varied shades that give the appearance of bark, the wood was burned, sanded and sealed.

"It's not unusual for people to purchase carved art and use it for display purposes in their homes," Dubrovsky says. "My signature is to make use of structural carvings to add character to the house."



A floor-to-ceiling stone fireplace provides a warm welcome in the master bedroom. This comfortable retreat, which includes a separate sitting area, allows the homeowners to have private time away from guests. French doors open out to a deck that overlooks the lake.